

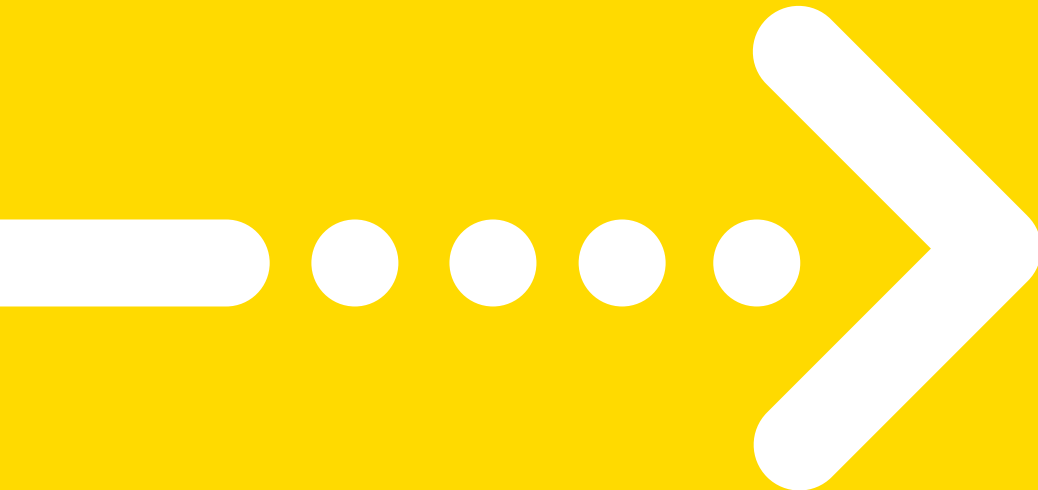
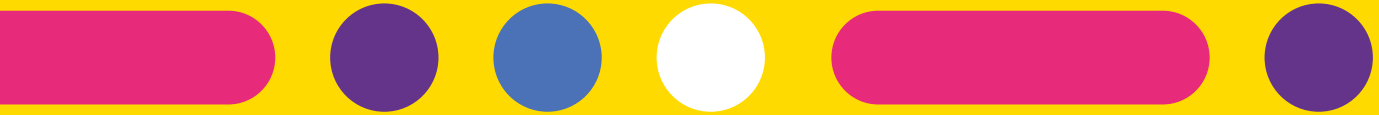
Three large empty shapes for drawing: a rounded rectangle on the left, a circle in the center, and a rounded rectangle on the right.

A grid of 24 smaller empty shapes for drawing, arranged in 4 rows and 3 columns. Each shape consists of a rounded rectangle followed by four small circles.

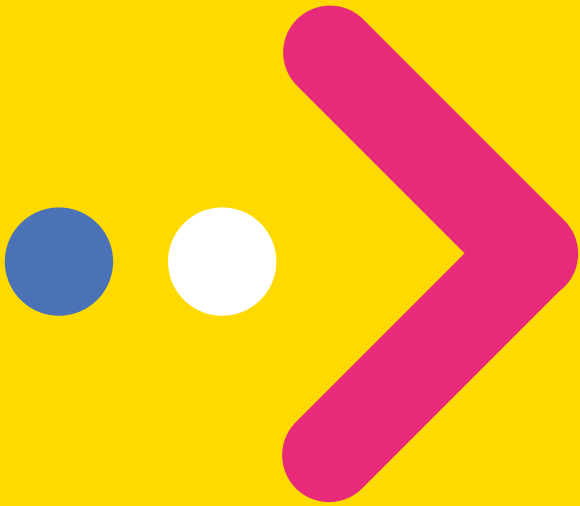
#welcome @ CAMPUS 6

swipe page to begin





#theagenda



-  1.0 Futureproof
-  2.0 Location & Amenities
-  3.0 Site Plan
-  4.0 Placemaking & Social Impact
-  5.0 Interior & Innovations
-  6.0 Green Features
-  7.0 About Us
-  8.0 Contact





Proof of design

- 1 Architecture
- 2 Placemaking
- 3 Art

We stand by our promise to deliver high-class offices, combining the best design practices, the principles of sustainable development and technological innovation.

We offer our customers solutions that support their present and future needs.





Proof of innovation

- 1 Products
- 2 Connected by Skanska
- 3 BIM



Proof of sustainability

- 1 Wellbeing
- 2 Biodiversity
- 3 Certification



We are constantly looking for new materials and technological solutions so that our buildings are ready for the challenges of the future.

INNOVATIONS



What does it mean to us?

Trends come and go and style evolves. Futureproof is a symbol that defines the focus areas that make Skanska a trustworthy partner.

Our investments are determined by functionality, low maintenance costs and minimal impact on the environment. Located in the best spots in the city, they are highly valuable assets on the office buildings market.

Sustainable development is in our company's DNA, therefore we design and construct our buildings aiming to benefit the society and respect the environment.

SUSTAINABILITY



Based on our Scandinavian roots and cooperation with top-notch architects, we provide timeless and functional design of our buildings.

DESIGN

#welcome

We designed Campus 6 with one goal: to change the way people mix life and work.

81 000 sqm GLA in 4 phases

1 000 parking places

10 floors of office spaces



POLITEHNICA
UNIVERSITY



Iuliu Maniu Ave.

Vasile Milea Ave.

#location

Campus 6 is located where two main boulevards of Bucharest meet: Iuliu Maniu and Vasile Milea.



Politehnica Metro station is 2 walking minutes away, across the street.



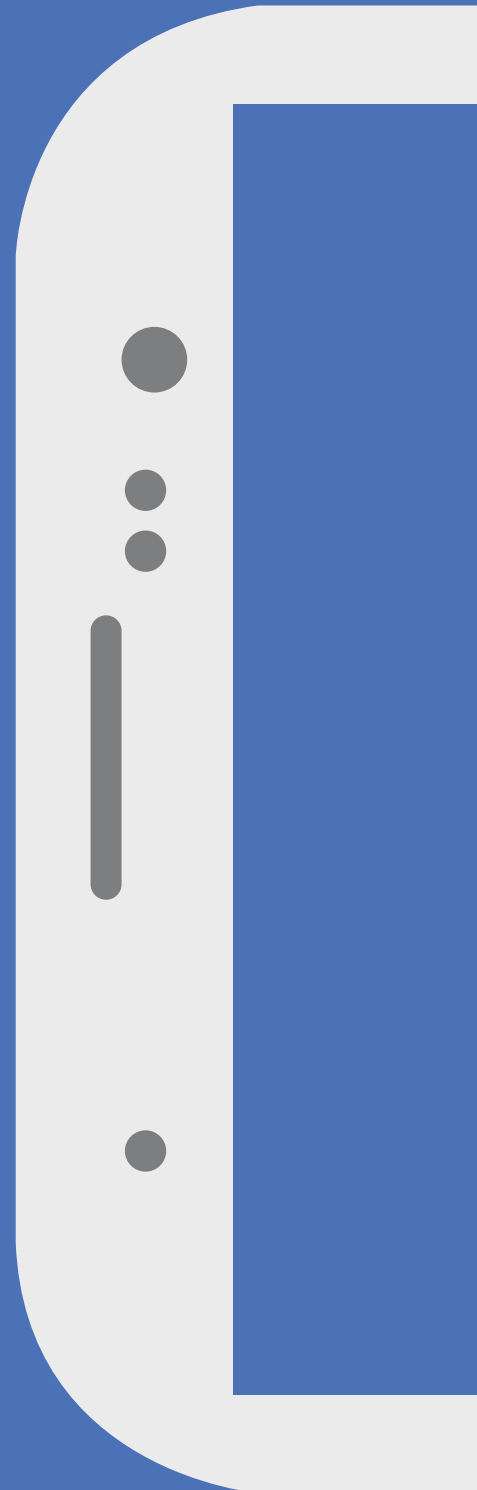
Tram station, connected with all neighborhoods, is located near the campus.



Two bus stations are placed in front of the campus, connected with all Bucharest areas.



Proof
of design



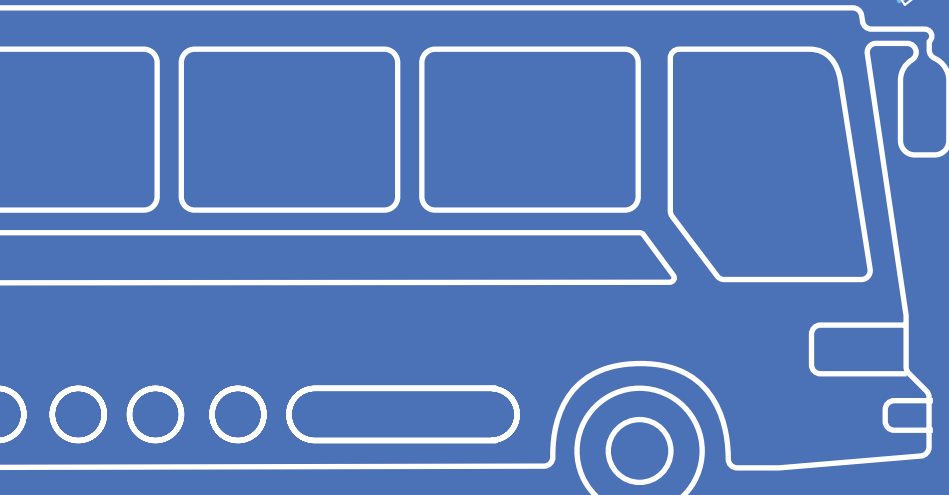
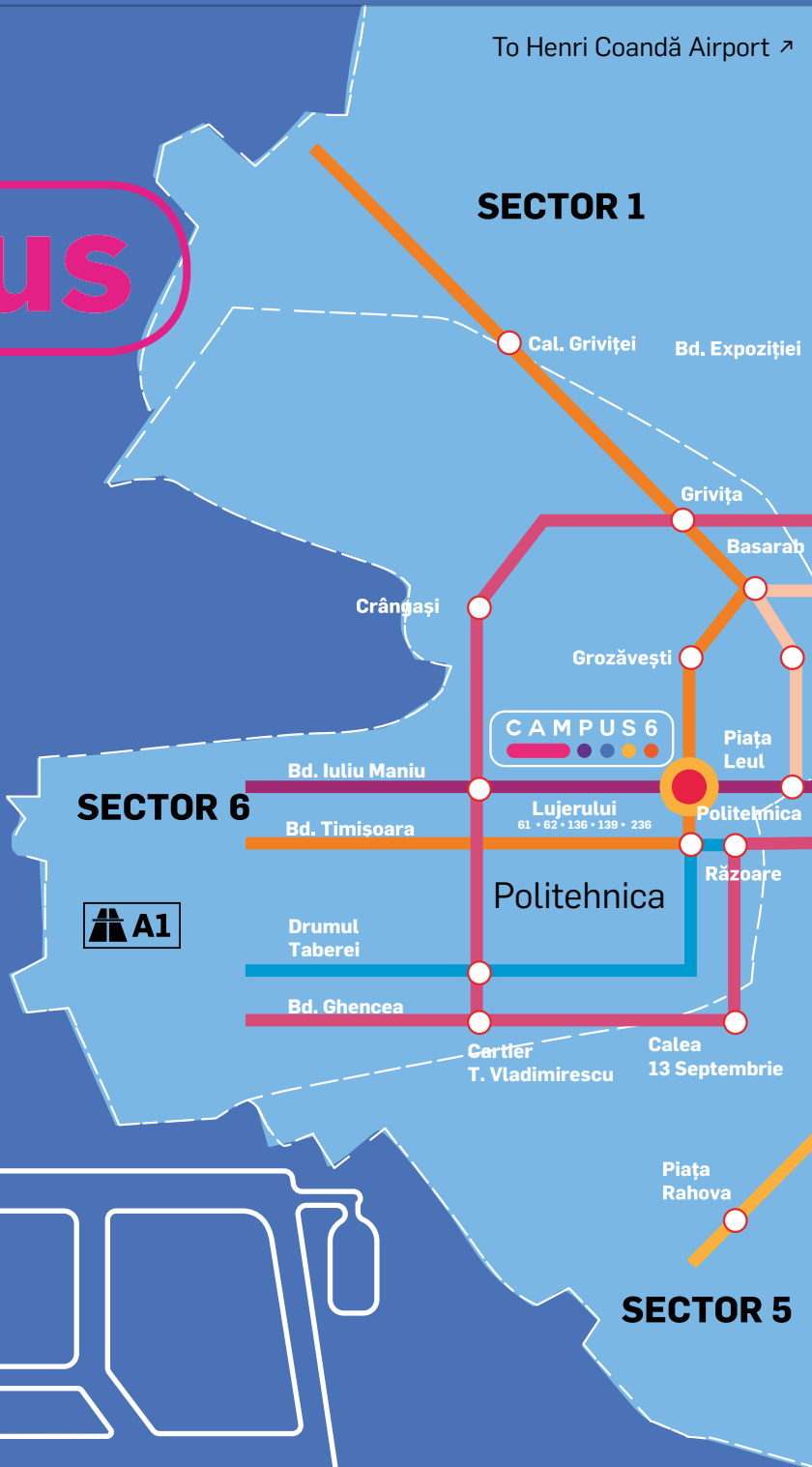


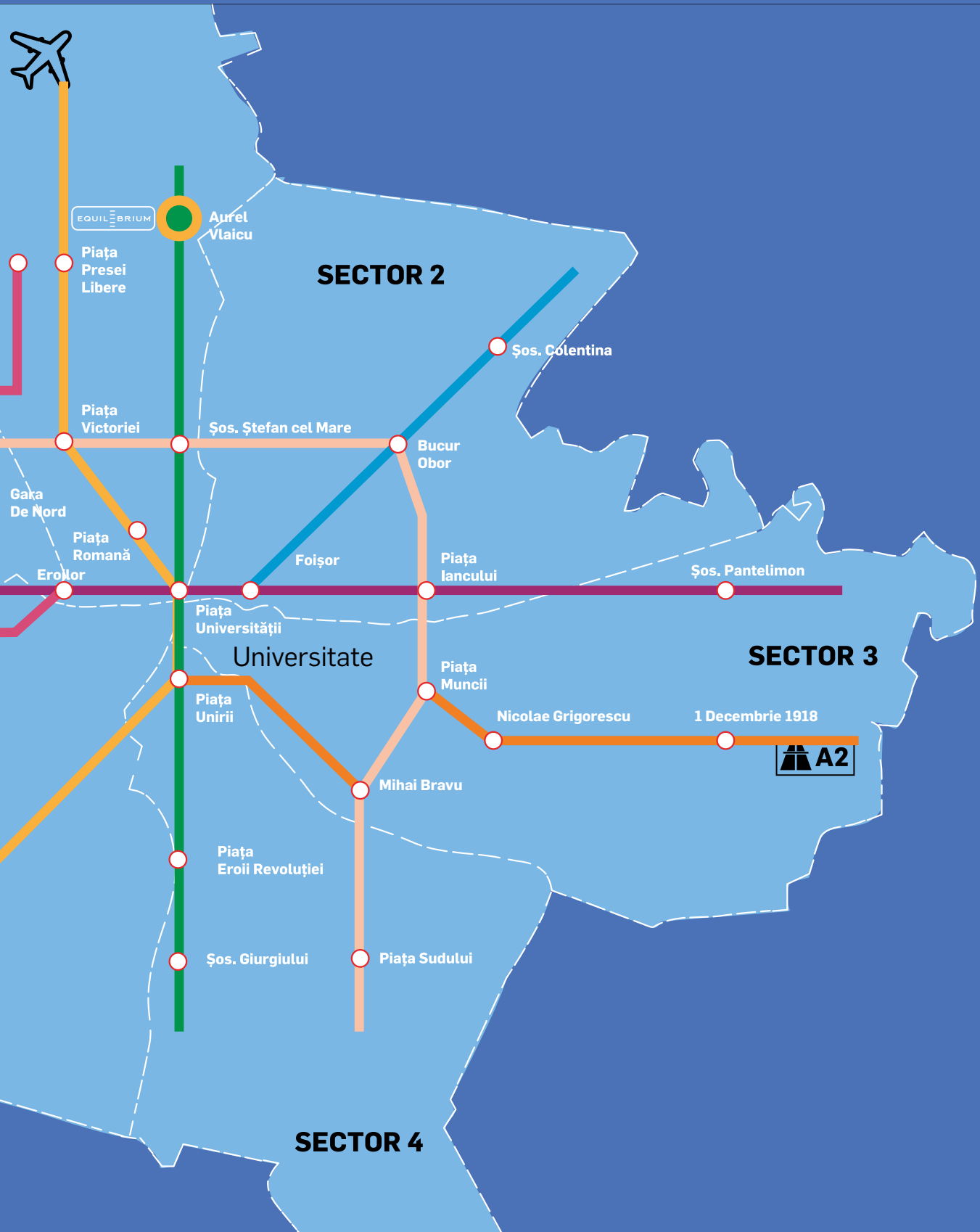
#bybus

You can easily reach Campus 6 wherever you are.

There are 2 bus stations in front of the project, connecting all Bucharest areas.

You just need to take one of these buses: 61, 62, 136, 236, 336, N115.

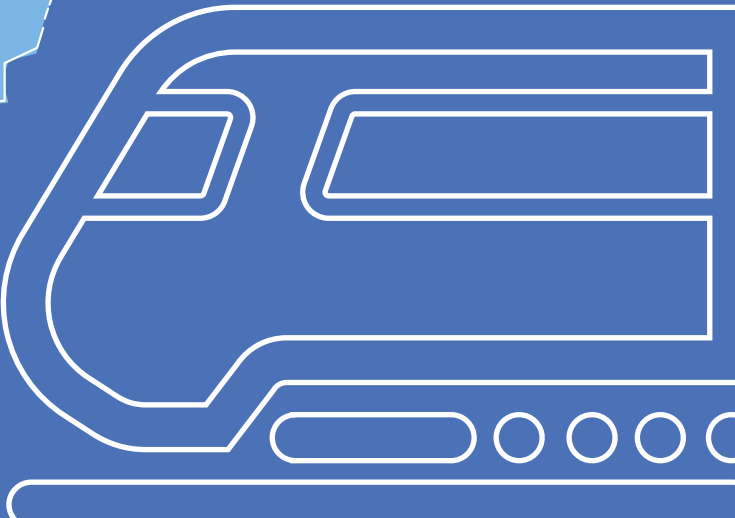






#bymetro

Politehnica Metro is 2 walking minutes away from the campus.



Walk Score: 83 out of 100 - Very Walkable

*according to: <https://www.walkscore.com/>

7'
walk
to fitness center




2'
walk
to the **Politehnica
University**
Campus Leu



7'
walk
to **Botanical Garden**





7'
walk  
to the restaurants &
shopping centers

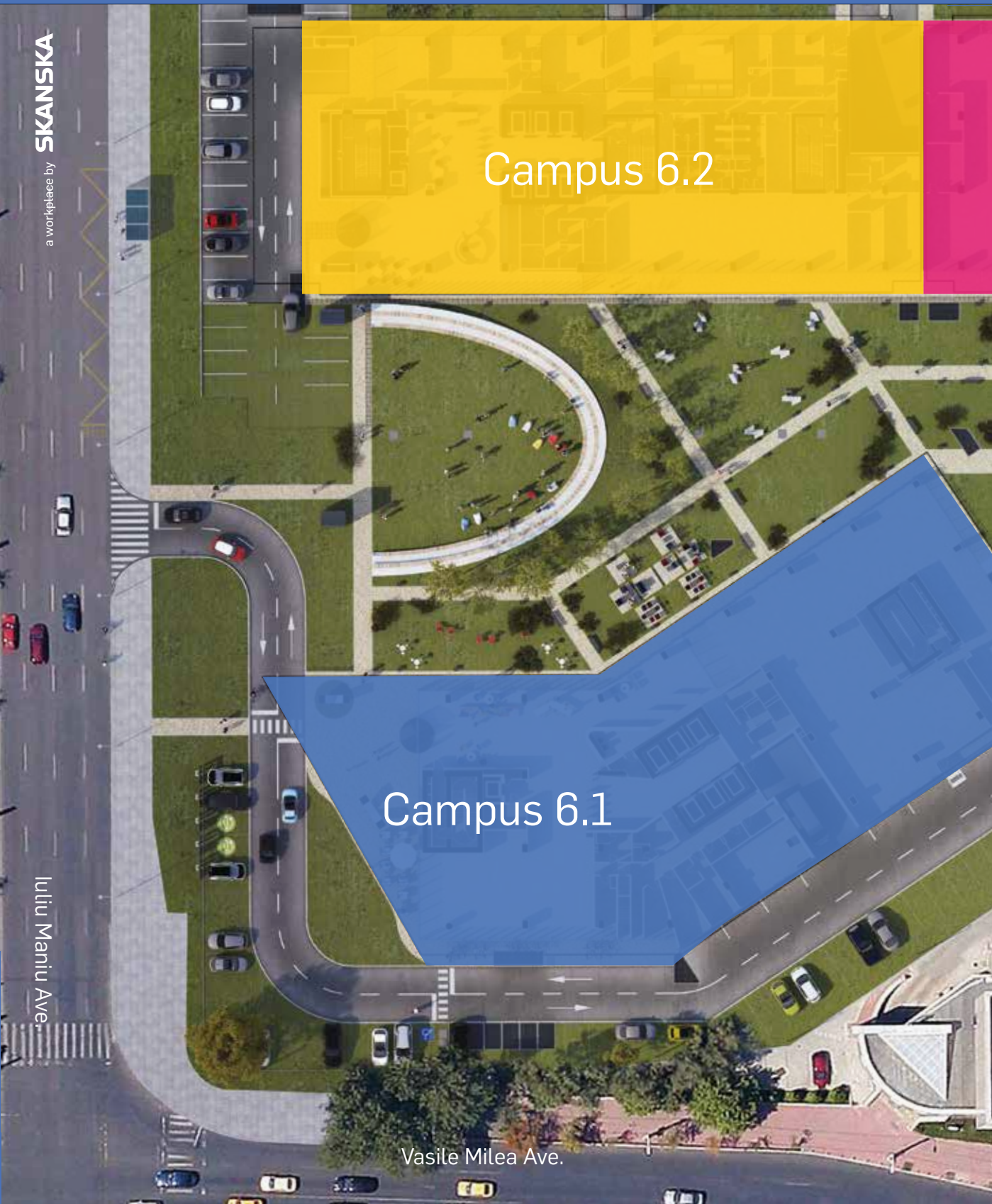
1'
walk 
to the bank

2'
walk
football & tennis court

7'
walk 
to the cinema

Campus 6.2

Campus 6.1



Campus 6.3

1

22.300 sqm;
274 parking spaces
delivered

Campus
6.1

2

19.800 sqm;
243 parking spaces
Q3 2020

Campus
6.2

Campus 6.4

3

17.550 sqm;
220 parking spaces
Q3 2020

Campus
6.3

4

21.150 sqm;
277 parking spaces
2022

Campus
6.4

#placemaking

Campus 6 is built to enable you to make the best of your day, whether it's business, leisure or social. Our aim is to cross the barrier from "a building" to "a destination".

Fundamentally, through its placemaking, Campus 6 provides spaces to connect you with your customers, colleagues, friends and, why not, with the city around you.



Proof
of design

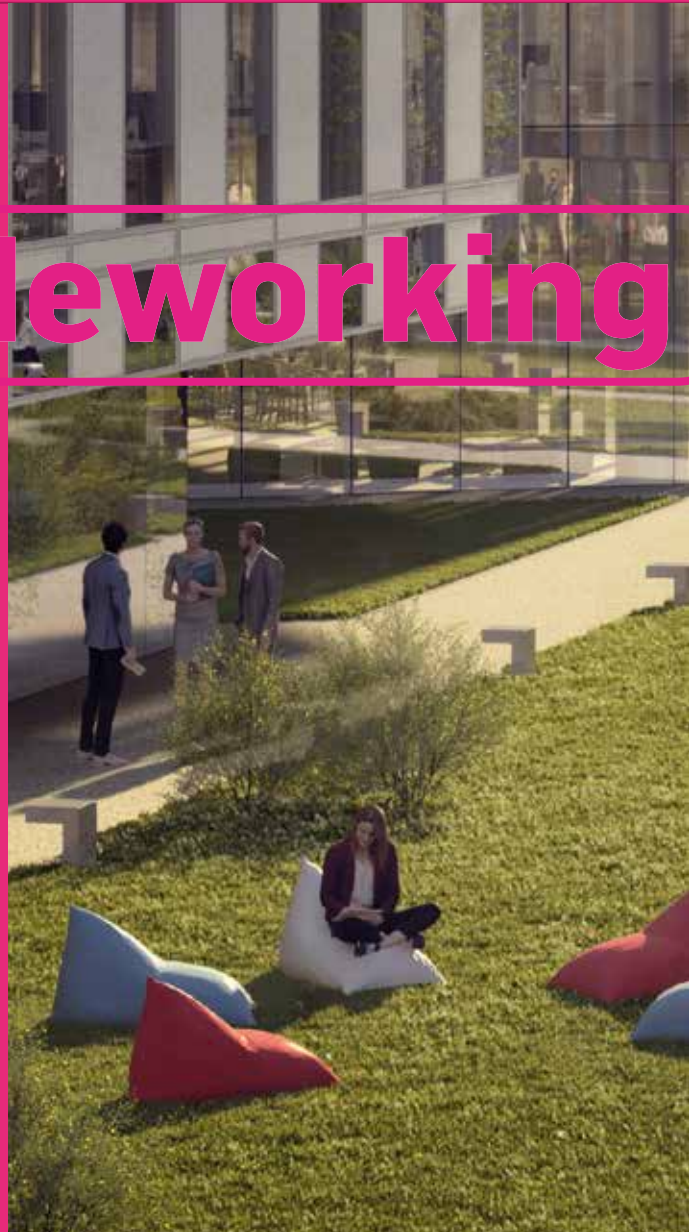




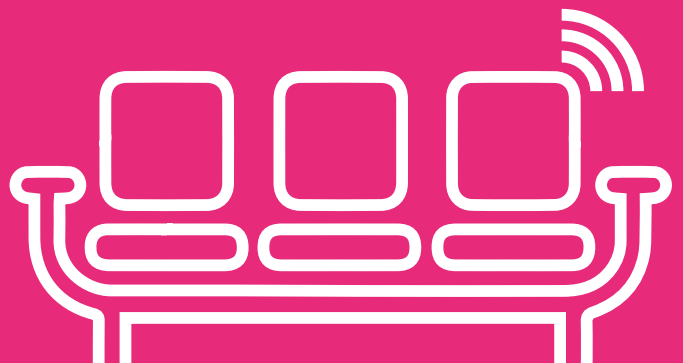
#outsideworking



At Campus 6 work is not tied to geography. If you want to work outside or just enjoy a break out of the office, we have great outdoor working spaces. Come to socialize in a fully connected outside, using our multifunctional exterior furniture with plug in and Wi-Fi.



Proof
of design





#meetingpoint

by day

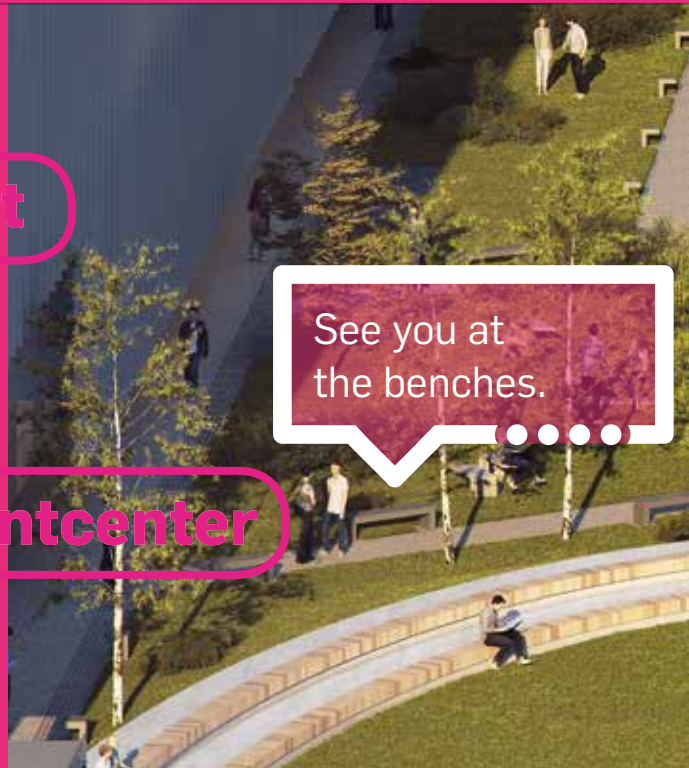
#entertainmentcenter

by evening

Either you enjoy day or evening cultural entertainment, Campus 6 is a smart choice at all times.

Why? Due to the generous green areas for relaxation, amphitheatres, restaurants and cafeterias.

There's a place for any kind of activities.



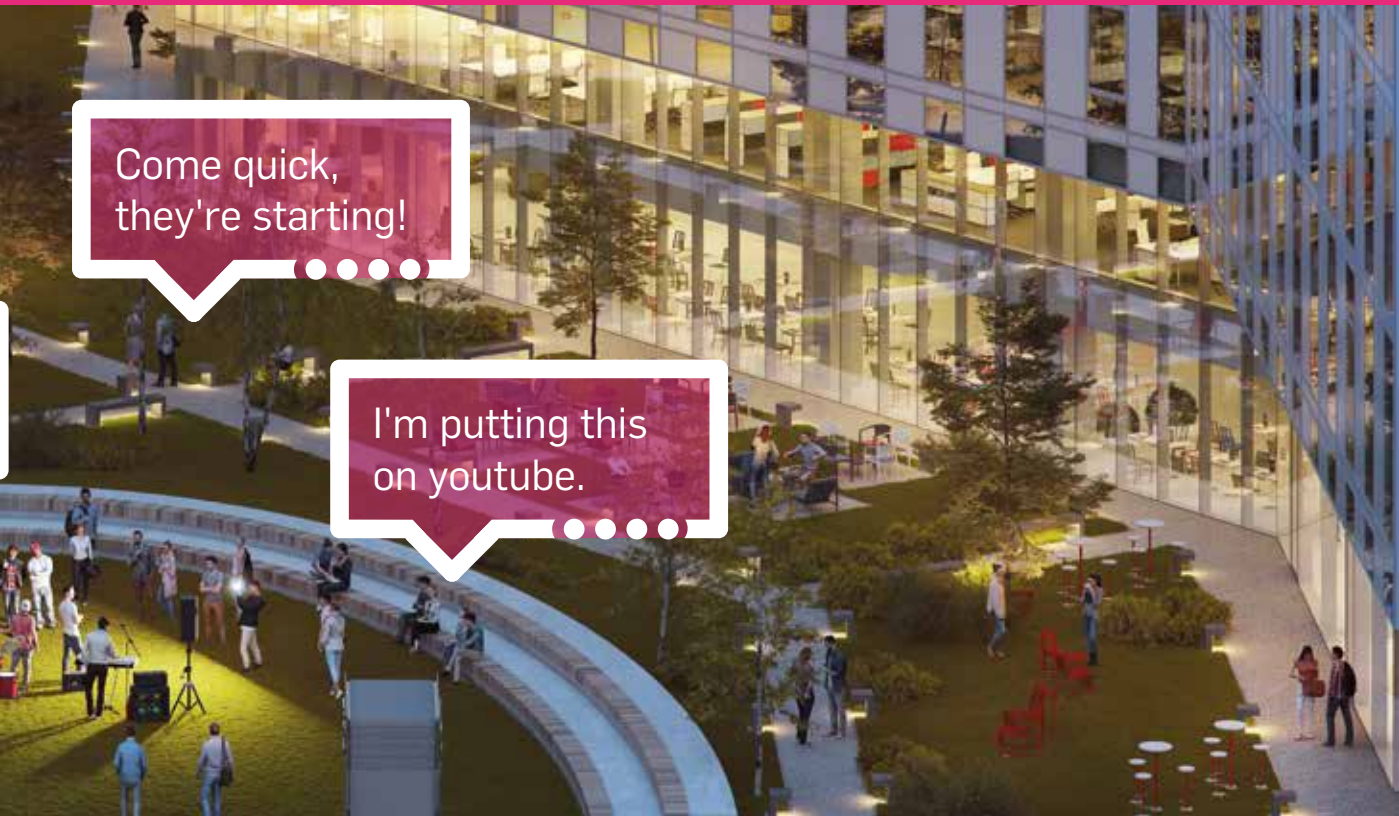
See you at the benches.



Let's stay on the grass!



Proof
of design



#running

on the roof



280m of track right on the roof. If you like to run, Campus 6 comes with the most surprising running destination in Bucharest. Yes, that's right. Make your runs on top of the city, all 10 stories up*.



Proof
of design



*available on buildings
C6.2 and C6.3



#transformplaces

199 years ago, the Politehnica University campus became a scene for science, technology, education, and most of all a home for generations of students. Our design for Campus 6 is shaped by that heritage – one of courage, ideas, community and openness for what the future might bring.



Proof
of design





#forabetersociety

Campus 6 aims for a sustainable environmental footprint and a balanced profile by putting office spaces alongside retail, service, public and social areas.

"We" are not building for NOW, but aim for a FUTUREPROOF design adding value to the community.



#ConnectedBySk



Virtual reception

invitees can enter the building with pre-registered mobile card, just like boarding the airplane. Virtual invitation provides also useful information about the building making a guest's experience simple and enjoyable!

Drop by Box

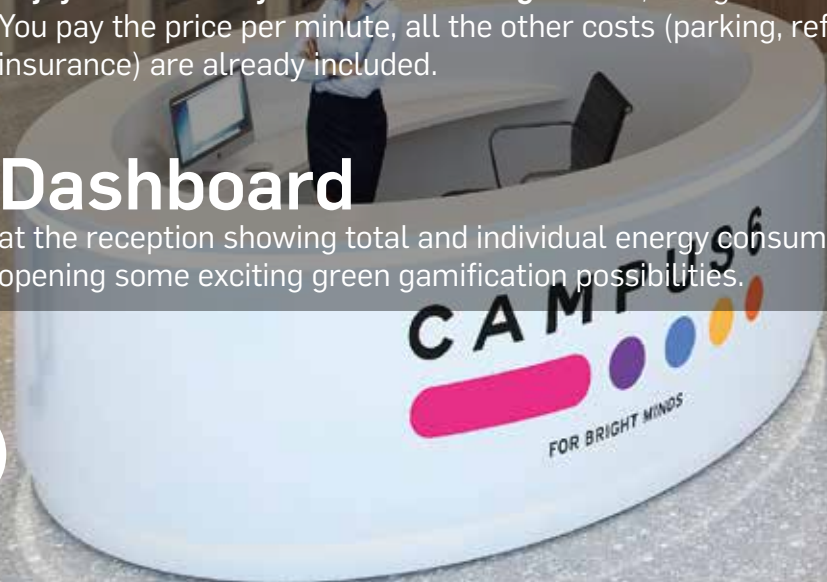
everybody can have their packages delivered into secured **Collection Point** with automated lockers, located inside the building.

Electrical car sharing

enjoy the flexibility of the car sharing service, using an electrical car. You pay the price per minute, all the other costs (parking, refueling and insurance) are already included.

Dashboard

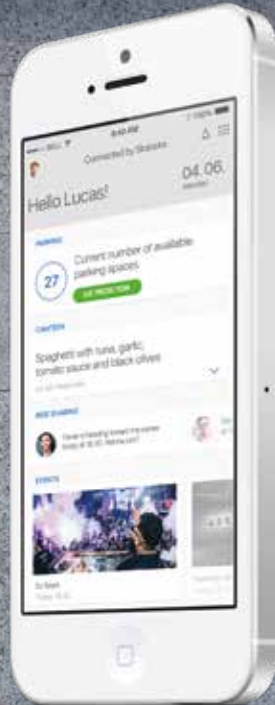
at the reception showing total and individual energy consumption opening some exciting green gamification possibilities.



Proof
of innovation



anska



Innovation is a key factor for us and we thrive to take it one step further. Our **DEDICATED SMARTPHONE APPLICATION**

provides you with the following smart facilities:

- building info
- amenities in and around the building
- events news
- car sharing
- requesting help or maintenance + customized modules based on tenant's needs

a workplace by SKANSKA

#liveitWELL



Proof
of design





If you were looking for spaces that fit your business vision, here they are. At **Campus 6** you can personalise everything from the pattern of the walls to the size of your office. Come with your own design ideas and bring them to life.

#gogreen

Bike racks and Ape Rider parking available.

Don't worry, we've got showers and lockers, waiting for you at any time of the day so you can get fresh after the ride.

WELL

First WELL pre-certified buildings in Romania*
 Perfectly fitted to your needs: clean air and water, healthy nourishment, natural light, fitness features, comfort solutions and mind-body balance.



*buildings C6.2 & C6.3

Dedicated Chargers

for electrical cars with high-speed charging time.



Energy saving systems.

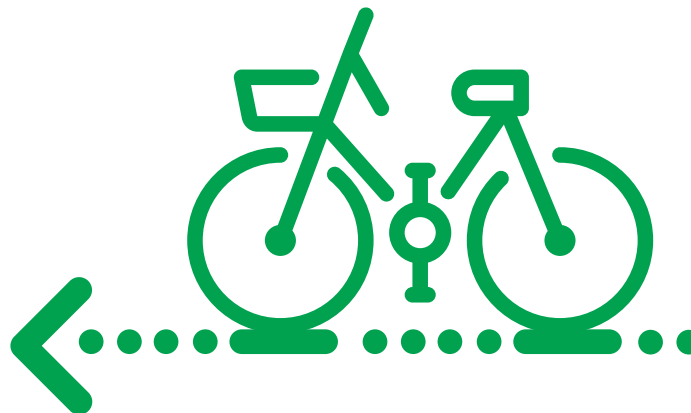


LEED

LEED Gold pre-certified buildings - healthy, highly efficient and cost-saving green buildings



Proof
of sustainability







#globalbusiness

SKANSKA

Skanska is one of the world's leading project development and construction groups, concentrated on selected home markets in the Nordic countries, European countries and in North America. We provide innovative and sustainable solutions to create a better future for our people, customers and communities.





#localapproach

#london

The Gherkin

Our purpose is to create value while building for a better society.

We are a global business organization, but with a personal approach for each community we are building for. Here are some of our top projects.



#copenhagen-malmö

Öresund Bridge



#bucharest

Green Court Bucharest



#newyork

Oculus, World Trade Center
Transit Hub

#letstalk



leasing.campus6@skanska.ro

A series of 10 rows of graphic design elements. Each row consists of two horizontal groups. Each group starts with four small circles, followed by a horizontal rounded rectangle, and then four more small circles. This pattern repeats for two groups per row, creating a total of 20 groups across the 10 rows.